



# **BAR & BAR ONE**

Tripod turnstiles

**n soft**



## **BAR TRIPOD TURNSTILES**

Our product line of waist-height tripod turnstiles is suitable for a wide variety of indoor and outdoor applications. With high quality construction and reliability, long term cost effective operation is assured. A wide range of designs enables to provide an ideal model to suit any interior and exterior. BAR tripod turnstiles represent a classic and safe way to protect your premises.

BAR turnstiles are equipped by motor driven unit with silent and smooth operation that is automatically adapted to the passing speed of users.



## BAR ONE TURNSTILES

Our new product line of BAR ONE is a unique waist-height turnstile range with space-saving, compact and modern design utilizing patented Magnetic Direct Drive motor - MDD motor. Compared to the conventional tripod technology, BAR ONE turnstiles have a higher throughput. These products can be extended with a broad variety of optional accessories.

MDD motor does not utilize a standard mechanical gearbox but provides exceptional reliability and maintenance-free operation and inherent resistance to the effects of dust and humidity.

BAR ONE was designed with respects to features, aesthetics and reliability while cost of ownership has been lowered without making compromises.

## C O N T E N T S

5	BAR ONE Unipod	13	BAR ST-DUO
6	BAR ONE Tripod	14	BAR SKR
7	BAR ONE Gate	15	BAR SKR-DropArm
8	BAR BA	16	BAR WN
9	BAR EC	17	BAR GX
10	BAR EK	18	Specification Overview
11	BAR EK-Wall	20	Options & Accessories
12	BAR ST		



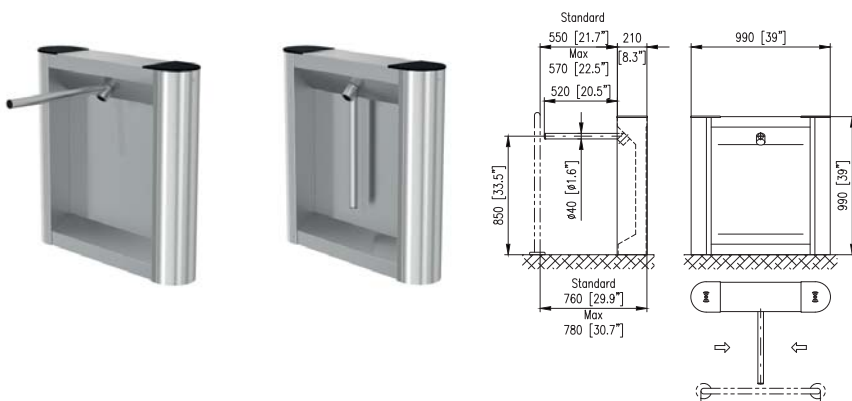


B A R O N E





## > BAR ONE Unipod



### DIMENSIONS

Cabinet height	990 mm	39.0"
Cabinet length	990 mm	39.0"
Cabinet width	210 mm	8.3"
Passage width	max 570 mm	max 22.5"

### MATERIAL AND COLORS

<b>Cabinet</b>	Brushed stainless steel
<b>Top Lid</b>	Brushed stainless steel with plastic ends
<b>Barrier</b>	Single arm / Brushed stainless steel

### OPERATING ENVIRONMENT

Outdoor *
Indoor
-25°C to +60°C / -13° to 140°F *

### DRIVE MECHANISM

Advanced Magnetic Direct Drive motor (MDD motor)

### OPTIONAL ACCESSORIES

RFID reader bracket (top / flush mounted)  
 Access light, Lane Light  
 Outdoor package  
 WAV player  
 USB convertor / Ethernet convertor  
 Infrared AntiClimb sensors  
 EasyTouch / TouchPanel / T-MON sw  
 SuperCap (emergency power back-up)  
 Alternative surface finishes  
 Optional top finishes  
 Ramp LT, Arm protector

### STANDARD EQUIPMENT

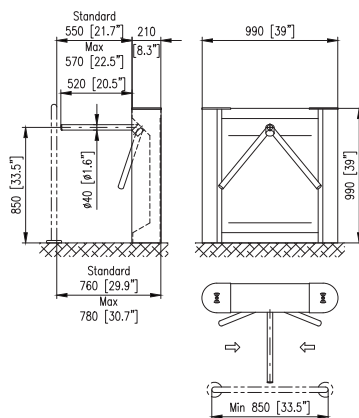
- Advanced Magnetic Direct Drive motor (MDD motor)
- Emergency folding feature
- Integrated disc spring brake
- Go Call - visual entry invitation feature
- Unobstructed passage including automatic reset

### SAFETY & SECURITY DETECTION

- Tailgating
- Climb over/crawl under \*
- Permanently blocked mode
- Emergency mode



## > BAR ONE Tripod



### DIMENSIONS

Cabinet height	990 mm	39.0"
Cabinet length	990 mm	39.0"
Cabinet width	210 mm	8.3"
Passage width	max 570 mm	max 22.5"

### MATERIAL AND COLORS

<b>Cabinet</b>	Brushed stainless steel
<b>Top Lid</b>	Brushed stainless steel with plastic ends
<b>Barrier</b>	Tripod arms / Brushed stainless steel

### OPERATING ENVIRONMENT

Outdoor \*

Indoor

-25°C to +60°C / -13° to 140°F \*

### DRIVE MECHANISM

Advanced Magnetic Direct Drive motor (MDD motor)

### OPTIONAL ACCESSORIES

RFID reader bracket (top / flush mounted)

Access light, Lane Light

Outdoor package

WAV player

USB converter / Ethernet converter

Infrared AntiClimb sensors

EasyTouch / TouchPanel / T-MON sw

SuperCap (emergency power back-up)

Alternative surface finishes

Optional top finishes

Ramp LT, Arm protector

### STANDARD EQUIPMENT

- Advanced Magnetic Direct Drive motor (MDD motor)
- Integrated disc spring brake
- Go Call - visual entry invitation feature
- Unobstructed passage including automatic reset

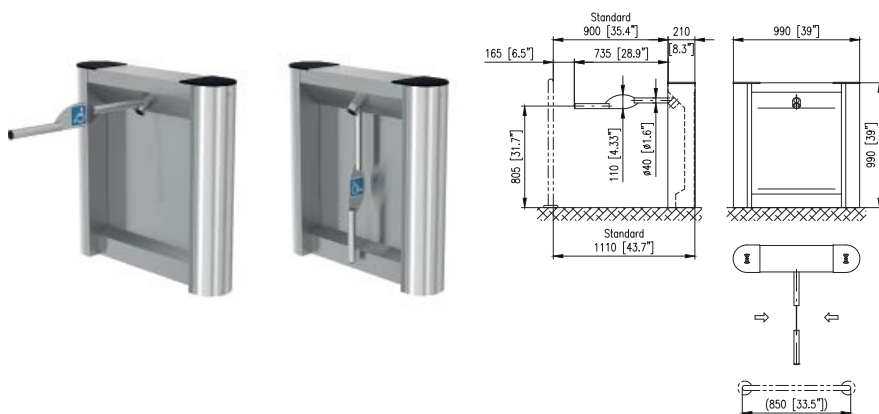
### SAFETY & SECURITY DETECTION

- Tailgating
- Climb over/crawl under \*
- Permanently blocked mode
- Emergency mode





## > BAR ONE Gate



### STANDARD EQUIPMENT

- Advanced Magnetic Direct Drive motor (MDD motor)
- Emergency folding feature
- Integrated disc spring brake
- Go Call - visual entry invitation feature
- Unobstructed passage including automatic reset

### SAFETY & SECURITY DETECTION

- Tailgating
- Climb over/crawl under \*
- Permanently blocked mode
- Emergency mode

### DIMENSIONS

Cabinet height	990 mm	39.0"
Cabinet length	990 mm	39.0"
Cabinet width	210 mm	8.3"
Passage width	900 mm	35.4"

### MATERIAL AND COLORS

<b>Cabinet</b>	Brushed stainless steel
<b>Top Lid</b>	Brushed stainless steel with plastic ends
<b>Barrier</b>	Single arm / Brushed stainless steel

### OPERATING ENVIRONMENT

Outdoor \*

Indoor

-25°C to +60°C / -13°F to 140°F \*

### DRIVE MECHANISM

Advanced Magnetic Direct Drive motor (MDD motor)

### OPTIONAL ACCESSORIES

RFID reader bracket (top / flush mounted)

Access light, Lane Light

Outdoor package

WAV player

USB converter / Ethernet converter

Infrared AntiClimb sensors

EasyTouch / TouchPanel / T-MON sw

SuperCap (emergency power back-up)

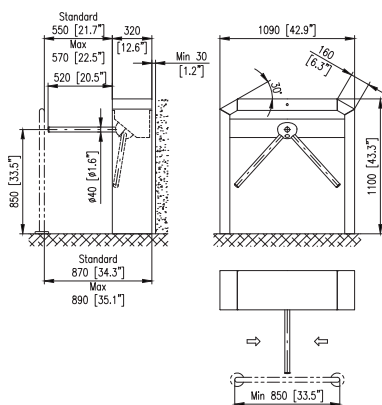
Alternative surface finishes

Optional top finishes

Ramp LT



## > BAR BA



### STANDARD EQUIPMENT

- Go Call - visual entry invitation feature
- Bi-directional passage

### SAFETY & SECURITY DETECTION

- Tailgating
- Climb over/crawl under \*
- Permanently blocked mode
- Emergency Drop Arm \*

### DIMENSIONS

Cabinet height	1100 mm	43.3"
Cabinet length	1090 mm	42.9"
Cabinet width	320 mm	12.6"
Passage width	max 570 mm	max 22.5"

### MATERIAL AND COLORS

<b>Cabinet</b>	Brushed stainless steel
<b>Top Lid</b>	Brushed stainless steel
<b>Barrier</b>	Tripod arms / Brushed stainless steel

### OPERATING ENVIRONMENT

Outdoor \*

Indoor

-25°C to +60°C / -13° to 140°F \*

### DRIVE MECHANISM

Fail-Lock

Fail-Safe

### OPTIONAL ACCESSORIES

RFID reader bracket (top / flush mounted)

Emergency Drop Arm

Access Light, Lane Light

Outdoor package

WAV player

USB convertor / Ethernet convertor

Infrared AntiClimb sensors

EasyTouch / TouchPanel / T-MON sw

Visitor card collector

SuperCap (emergency power back-up)

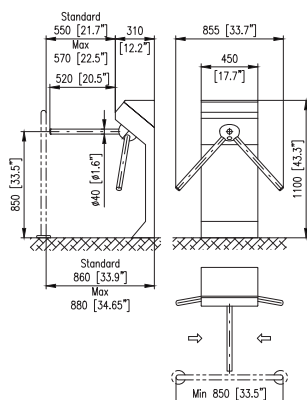
Alternative surface finishes

Ramp LT, Arm protector





## > BAR EC



### DIMENSIONS

Cabinet height	1100 mm	43.3"
Cabinet length	450 mm	17.7"
Cabinet width	310 mm	12.2"
Passage width	max 570 mm	max 22.5"

### MATERIAL AND COLORS

<b>Cabinet</b>	Painted Polyester Powder Coated
<b>Top Lid</b>	Painted Polyester Powder Coated
<b>Barrier</b>	Tripod arms / Brushed stainless steel

### OPERATING ENVIRONMENT

- Outdoor with roof protection \*
- Indoor
- 25°C to +60°C / -13° to 140°F \*

### DRIVE MECHANISM

- Fail-Lock
- Fail-Safe

### OPTIONAL ACCESSORIES

- RFID reader bracket (top / flush mounted)
- Emergency Drop Arm
- Lane Light
- Outdoor package
- WAV player
- USB convertor / Ethernet convertor
- Infrared AntiClimb sensors
- EasyTouch / TouchPanel / T-MON sw
- SuperCap (emergency power back-up)
- Alternative surface finishes
- Ramp LT, Arm protector

### STANDARD EQUIPMENT

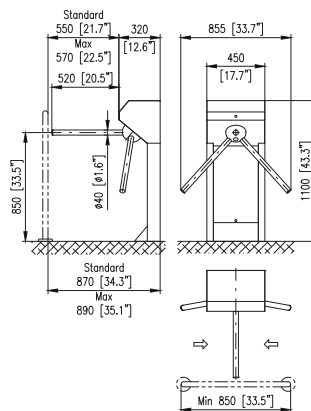
- Go Call - visual entry invitation feature
- Bi-directional passage

### SAFETY & SECURITY DETECTION

- Tailgating
- Climb over/crawl under \*
- Permanently blocked mode
- Emergency Drop Arm \*



## > BAR EK



### DIMENSIONS

Cabinet height	1100 mm	43.3"
Cabinet length	450 mm	17.7"
Cabinet width	320 mm	12.6"
Passage width	max 570 mm	max 22.5"

### MATERIAL AND COLORS

<b>Cabinet</b>	Brushed stainless steel
<b>Top Lid</b>	Brushed stainless steel
<b>Barrier</b>	Tripod arms / Brushed stainless steel

### OPERATING ENVIRONMENT

Outdoor with roof protection \*

Indoor

-25°C to +60°C / -13° to 140°F \*

### DRIVE MECHANISM

Fail-Lock

Fail-Safe

### OPTIONAL ACCESSORIES

RFID reader bracket (top / flush mounted)

Emergency Drop Arm

Lane Light

Outdoor package

WAV player

USB convertor / Ethernet convertor

Infrared AntiClimb sensors

EasyTouch / TouchPanel / T-MON sw

SuperCap (emergency power back-up)

Alternative surface finishes

Ramp LT, Arm protector

### STANDARD EQUIPMENT

- Go Call - visual entry invitation feature
- Bi-directional passage

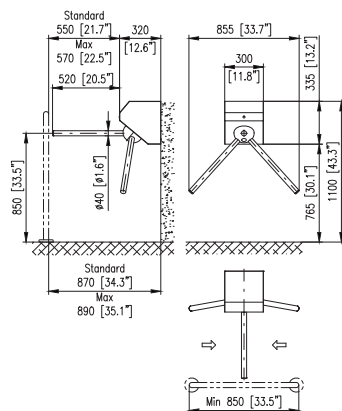
### SAFETY & SECURITY DETECTION

- Tailgating
- Climb over/crawl under \*
- Permanently blocked mode
- Emergency Drop Arm \*





## > BAR EK-Wall



### DIMENSIONS

Cabinet height	335 mm	13.2"
Cabinet length	300 mm	11.8"
Cabinet width	320 mm	12.6"
Passage width	max 570 mm	max 22.5"

### MATERIAL AND COLORS

<b>Cabinet</b>	Brushed stainless steel
<b>Top Lid</b>	Brushed stainless steel
<b>Barrier</b>	Tripod arms / Brushed stainless steel

### OPERATING ENVIRONMENT

Outdoor with roof protection \*

Indoor

-25°C to +60°C / -13° to 140°F \*

### DRIVE MECHANISM

Fail-Lock

Fail-Safe

### OPTIONAL ACCESSORIES

RFID reader bracket (top / flush mounted)

Emergency Drop Arm

Lane Light

Outdoor package

WAV player

USB convertor / Ethernet convertor

Infrared AntiClimb sensors

EasyTouch / TouchPanel / T-MON sw

SuperCap (emergency power back-up)

Alternative surface finishes

Ramp LT, Arm protector

### STANDARD EQUIPMENT

- Go Call - visual entry invitation feature
- Bi-directional passage

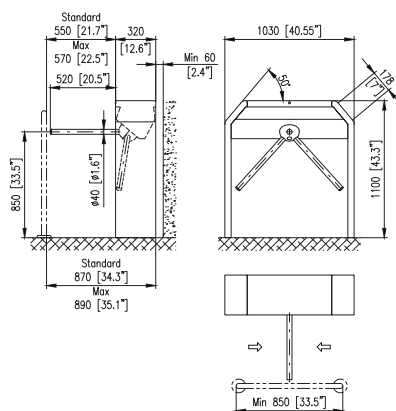
### SAFETY & SECURITY DETECTION

- Tailgating
- Climb over/crawl under \*
- Permanently blocked mode
- Emergency Drop Arm \*





## > BAR ST



### STANDARD EQUIPMENT

- Go Call - visual entry invitation feature
- Bi-directional passage

### SAFETY & SECURITY DETECTION

- Tailgating
- Climb over/crawl under \*
- Permanently blocked mode
- Emergency Drop Arm \*

### DIMENSIONS

Cabinet height	1100 mm	43.3"
Cabinet length	1030 mm	40.55"
Cabinet width	320 mm	12.6"
Passage width	max 570 mm	max 22.5"

### MATERIAL AND COLORS

<b>Cabinet</b>	Painted Polyester Powder Coated
<b>Top Lid</b>	Painted Polyester Powder Coated
<b>Barrier</b>	Tripod arms / Brushed stainless steel

### OPERATING ENVIRONMENT

Outdoor \*

Indoor

-25°C to +60°C / -13°F to 140°F \*

### DRIVE MECHANISM

Fail-Lock

Fail-Safe

### OPTIONAL ACCESSORIES

RFID reader bracket (top / flush mounted)

Emergency Drop Arm

Access Light, Lane Light

Outdoor package

WAV player

USB convertor / Ethernet convertor

Infrared AntiClimb sensors

EasyTouch / TouchPanel / T-MON sw

Visitor card collector

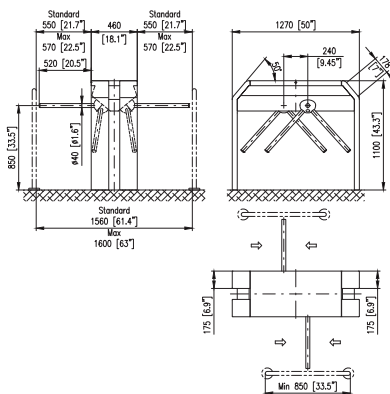
SuperCap (emergency power back-up)

Alternative surface finishes

Ramp LT, Arm protector



## > BAR ST-DUO



### DIMENSIONS

Cabinet height	1100 mm	43.3"
Cabinet length	1270 mm	50.0"
Cabinet width	460 mm	18.1"
Passage width	max 570 mm	max 22.5"

### MATERIAL AND COLORS

<b>Cabinet</b>	Painted Polyester Powder Coated
<b>Top Lid</b>	Painted Polyester Powder Coated
<b>Barrier</b>	Tripod arms / Brushed stainless steel

### OPERATING ENVIRONMENT

- Outdoor \*
- Indoor
- 25°C to +60°C / -13°F to 140°F \*

### DRIVE MECHANISM

- Fail-Lock
- Fail-Safe

### OPTIONAL ACCESSORIES

- RFID reader bracket (top / flush mounted)
- Emergency Drop Arm
- Access Light, Lane Light
- Outdoor package
- WAV player
- USB convertor / Ethernet convertor
- Infrared AntiClimb sensors
- EasyTouch / TouchPanel / T-MON sw
- Visitor card collector
- SuperCap (emergency power back-up)
- Alternative surface finishes
- Ramp LT, Arm protector

### STANDARD EQUIPMENT

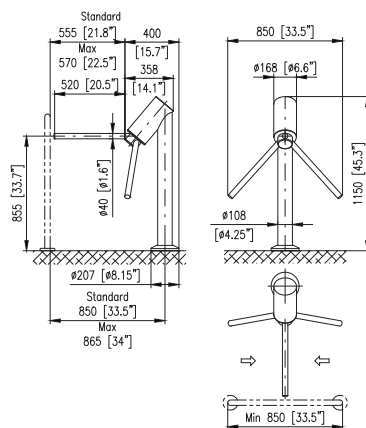
- Go Call - visual entry invitation feature
- Bi-directional passage

### SAFETY & SECURITY DETECTION

- Tailgating
- Climb over/crawl under \*
- Permanently blocked mode
- Emergency Drop Arm \*

\* Optional accessories





- Go Call - visual entry invitation feature
- Bi-directional passage

- Tailgating
- Permanently blocked mode
- Emergency mode

Cabinet height	1150 mm	45.3"
Cabinet length	168 mm	6.6"
Cabinet width	358 mm	14.1"
Passage width	max 570 mm	max 22.5"

<b>Cabinet</b>	Brushed stainless steel
<b>Top Lid</b>	Brushed stainless steel
<b>Barrier</b>	Tripod arms / Brushed stainless steel

Outdoor \*

Indoor

-25°C to +60°C / -13° to 140°F \*

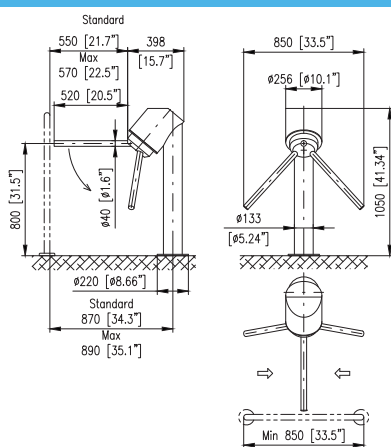
Fail-Lock  
Fail-Safe

- RFID reader bracket (top mounted)
- Outdoor package
- WAV player
- USB convertor / Ethernet convertor
- EasyTouch / TouchPanel / T-MON sw
- SuperCap (emergency power back-up)
- Alternative surface finishes
- Ramp LT, Arm protector





## > BAR SKR-DropArm



### STANDARD EQUIPMENT

- Go Call - visual entry invitation feature
- Emergency Drop Arm
- Bi-directional passage

### SAFETY & SECURITY DETECTION

- Tailgating
- Permanently blocked mode
- Emergency mode

### DIMENSIONS

Cabinet height	1050 mm	41.3"
Cabinet length	256 mm	10.1"
Cabinet width	398 mm	15.7"
Passage width	max 570 mm	max 22.5"

### MATERIAL AND COLORS

<b>Cabinet</b>	Brushed stainless steel
<b>Top Lid</b>	Brushed stainless steel
<b>Barrier</b>	Tripod arms / Brushed stainless steel

### OPERATING ENVIRONMENT

Outdoor \*

Indoor

-25°C to +60°C / -13° to 140°F \*

### DRIVE MECHANISM

Fail-Lock

Fail-Safe

### OPTIONAL ACCESSORIES

RFID reader bracket (top / flush mounted)

Outdoor package

WAV player

USB convertor / Ethernet convertor

EasyTouch / TouchPanel / T-MON sw

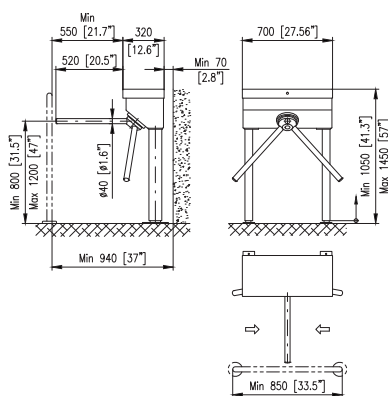
SuperCap (emergency power back-up)

Alternative surface finishes

Ramp LT, Arm protector



## > BAR WN



### DIMENSIONS

Cabinet height	1050 mm	41.3"
Cabinet length	700 mm	27.5"
Cabinet width	320 mm	12.6"
Passage width	max 570 mm	max 22.5"

### MATERIAL AND COLORS

<b>Cabinet</b>	Painted Polyester Powder Coated
<b>Top Lid</b>	Painted Polyester Powder Coated
<b>Barrier</b>	Tripod arms / Brushed stainless steel

### OPERATING ENVIRONMENT

Outdoor
Indoor
-25°C to +60°C / -13° to 140°F

### DRIVE MECHANISM

Fail-Lock
Fail-Safe

### OPTIONAL ACCESSORIES

RFID reader bracket (top / flush mounted)
WAV player
USB convertor / Ethernet convertor
EasyTouch / TouchPanel / T-MON sw
SuperCap (emergency power back-up)
Alternative surface finishes
Ramp LT, Arm protector

### STANDARD EQUIPMENT

- Go Call - visual entry invitation feature
- Bi-directional passage
- Outdoor package

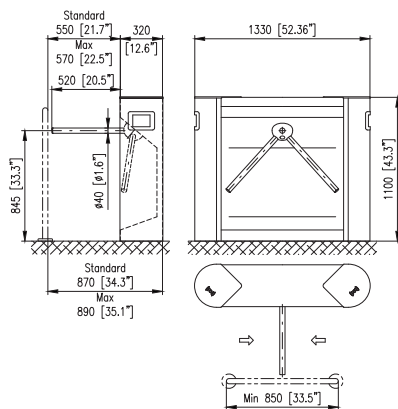
### SAFETY & SECURITY DETECTION

- Tailgating
- Permanently blocked mode
- Emergency mode





## > BAR GX



### STANDARD EQUIPMENT

- Go Call - visual entry invitation feature
- Bi-directional passage

### SAFETY & SECURITY DETECTION

- Tailgating
- Climb over/crawl under \*
- Permanently blocked mode
- Emergency Drop Arm \*

### DIMENSIONS

Cabinet height	1100 mm	43.3"
Cabinet length	1330 mm	52.36"
Cabinet width	320 mm	12.6"
Passage width	max 570 mm	max 22.5"

### MATERIAL AND COLORS

<b>Cabinet</b>	Brushed stainless steel
<b>Top Lid</b>	Brushed stainless steel with glass ends
<b>Barrier</b>	Tripod arms / Brushed stainless steel

### OPERATING ENVIRONMENT

Indoor  
-25°C to +60°C / -13° to 140°F \*





### DRIVE MECHANISM










Fail-Lock  
Fail-Safe

### OPTIONAL ACCESSORIES

RFID reader bracket (top / flush mounted)  
Emergency Drop Arm  
Access Light, Lane Light  
Outdoor package  
WAV player  
USB convertor / Ethernet convertor  
Infrared AntiClimb sensors  
EasyTouch / TouchPanel / T-MON sw  
Visitor card collector  
SuperCap (emergency power back-up)  
Alternative surface finishes  
Optional top finishes  
Ramp LT, Arm protector



Turnstile model	BAR ONE Unipod	BAR ONE Tripod	BAR ONE Gate	BAR BA
				
<b>Dimensions</b>				
Cabinet height	990 (39")	990 (39")	990 (39")	1100 (43.3")
Cabinet length	990 (39")	990 (39")	990 (39")	1090 (42.9")
Cabinet width	210 (8.3")	210 (8.3")	210 (8.3")	320 (12.6")
Passage width (max)	570 (22.5")	570 (22.5")	900 (35.4")	570 (22.5")
Barrier type (T-Tripod, S-Single Arm)	S	T	S	T
ADA compliant width	-	-	•	-
Bi-directional passage mode	•	•	•	•
<b>Material and colors</b>				
Stainless steel cabinet material (AISI 304)	•	•	•	•
RAL Painted cabinet	-	-	-	-
Stainless steel barrier	•	•	•	•
<b>Safety features</b>				
Emergency mode / Emergency Drop Arm [1]	• / •	• / -	• / •	• / •
Crawl under [1] / Climb over - detection [1]	• / •	• / •	• / •	• / •
Fail-Safe motor drive unit [2]	-	-	-	•
Advanced Magnetic Direct Drive motor (MDD motor)	•	•	•	-
<b>Communication interface</b>				
Relay Inputs / Outputs	• [1]	• [1]	• [1]	•
RS485 / USB / Ethernet	• / • / • [1]	• / • / • [1]	• / • / • [1]	• / • / •
<b>Operating environment</b>				
Indoor / Outdoor with cover* / Outdoor uncovered*	• / • / •	• / • / •	• / • / •	• / • / •
<b>Optional features</b>				
Integrated proximity reader flush mounting (for any type of proximity card reader)	•	•	•	•
Access Light - "User-friendly" illuminated card read area guide (positioned directly over card reader)	•	•	•	•
LED Lane Light	•	•	•	•
<b>Optional remote control systems</b>				
External implementation of Identification or Ticket terminals	•	•	•	•
Remote control console (EasyTouch, TouchPanel)	•	•	•	•
TMON SW application (remote control from any PC) / Passage Scheduler (automatic planner)	• / •	• / •	• / •	• / •
Integrated Visitor Card collector	-	-	-	•
<b>Optional power supply input</b>				
24V DC / 24V AC / 230V AC (50Hz) or 115V AC (60Hz)	• / • / •	• / • / •	• / • / •	• / • / •
SuperCap (emergency power back-up)	•	•	•	•
<b>Optional finishes</b>				
Tops - Natural Stone, Mfg Solid Surfaces, Glass, Woods, etc.	•	•	•	-
Custom cabinet & top finishes - Blackened Stainless Steel, Brass, Bronze, Copper, RAL color, etc.	•	•	•	•
<b>Optional mounting accessories</b>				
Ramp LT - Structural Mounting Bases (surface mounting system - with no drilling or cutting of floor)	•	•	•	•
Mounting console: raised floor or recessed below grade mounting system	•	•	•	•

BAR EC	BAR EK	BAR EK-Wall	BAR ST	BAR ST-DUO	BAR SKR	BAR SKR-DropArm	BAR WN	BAR GX
								
1100 (43.3")	1100 (43.3")	335 (13.2")	1100 (43.3")	1100 (43.3")	1150 (45.3")	1150 (45.3")	1050 (41.3")	1100 (43.3")
450 (17.7")	450 (17.7")	300 (11.8")	1030 (40.55")	1270 (50")	168 (6.6")	256 (10.1")	700 (27.5")	1330 (52.36")
310 (12.2")	320 (12.6")	320 (12.6")	320 (12.6")	460 (18.1")	358 (14.1")	398 (15.7")	320 (12.6")	320 (12.6")
570 (22.5")	570 (22.5")	570 (22.5")	570 (22.5")	570 (22.5")	570 (22.5")	570 (22.5")	570 (22.5")	570 (22.5")
T	T	T	T	T	T	T	T	T
-	-	-	-	-	-	-	-	-
•	•	•	•	•	•	•	•	•
-	•	•	-	-	•	•	-	•
•	-	-	•	•	-	-	•	-
•	•	•	•	•	•	•	•	•
• / •	• / •	• / •	• / •	• / •	• / -	• / • [3]	• / -	• / •
• / •	• / •	• / •	• / •	• / •	- / -	- / -	- / -	• / •
•	•	•	•	•	•	•	•	•
-	-	-	-	-	-	-	-	-
•	•	•	•	•	•	•	•	•
• / • / •	• / • / •	• / • / •	• / • / •	• / • / •	• / • / •	• / • / •	• / • / •	• / • / •
• / • / -	• / • / -	• / • / -	• / • / •	• / • / •	• / • / •	• / • / •	• / • / • [4]	• / - / -
•	•	•	•	•	-	•	•	•
-	-	-	-	-	-	-	-	•
•	•	•	•	•	-	-	•	•
•	•	•	•	•	•	•	•	•
•	•	•	•	•	•	•	•	•
• / •	• / •	• / •	• / •	• / •	• / •	• / •	• / •	• / •
-	-	-	-	-	-	-	-	•
• / • / •	• / • / •	• / • / •	• / • / •	• / • / •	• / • / -	• / • / -	• / • / •	• / • / •
•	•	•	•	•	•	•	•	•
-	-	-	-	-	-	-	-	•
•	•	•	•	•	•	•	•	•
•	•	•	•	•	•	•	•	•
•	•	•	•	•	•	•	•	•

## > Options & Accessories



**EASY::TOUCH** - turnstile remote control console with an intuitive graphical user interface



**TOUCH PANEL** - Touch-button panel for remote control of turnstiles and gates



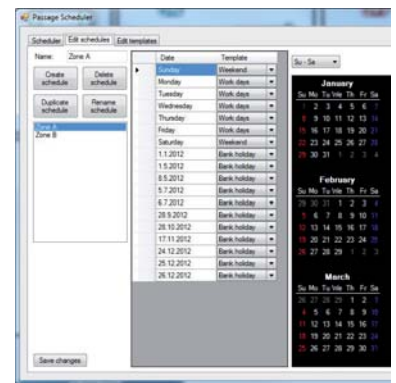
**TMON SOFTWARE** - software application for easy remote control of the turnstiles and gates



**ACCESS LIGHT** - access control light with integrated RFID bracket



**LANE LIGHT** - front mounted lane accessibility light panel



**PASSAGE SCHEDULER** - software planner for automatic time programming of turnstile operation mode



**EMERGENCY DROP ARM** - automatically drops the horizontal arm in emergency mode



**ANTICLIMB SENSORS** - infrared sensors to detect jumping over/crawling under the tripod (unipod) arms



**ARM PROTECTOR** - protector of tripod/unipod bar made of black toughened rubber material



**WAV PLAYER** - sound signaling device for audio confirmation of turnstile operation mode



**OUTDOOR PACKAGE** - special package for outdoor application (heating module + IP protection)



**SUPERCAP** - maintenance-free power package for Emergency opening of turnstile/gate



## > Options & Accessories



**EXI-R** - visitor card / badge collector with return function impelmented in stainless steel pole



**EXI2** - integrated visitor card collector with collection box



**TICKETING TERMINAL** - external implementation of identification terminals



**RAMP LT** - for installation on floor where drilling/cutting is not allowed



**MOUNTING CONSOLE** - mounting console for raised/suspended floor



**ALTERNATIVE SURFACE FINISH** - polished stainless steel / brushed stainless steel / etc.



**ADDITIONAL GATE PEGAS GLE** - alternative motorized swing gate for wheelchair access



**GLASS INFILL BARRIER** - convenient way to aesthetically enclose the secure areas from public area











*Specifications are subject to change without prior notice.*

## Official representative in Lithuania

**nSoft Ltd,**  
Žalgirio str. 88A, Vilnius LT-09303

info@nsoft.lt

<http://www.nsoft.lt>

# n soft

